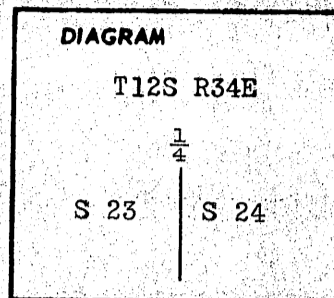


141

CERTIFIED RECORD OF LAND CORNER MONUMENTATION

History of original corner establishment:

Corner established in 1869 by John B. David under General Land Office Contract No. 131 dated June 8, 1869. Surveyor General Records state:



Set post for corner from which:

A pine 18 inches diameter bears S45°W, 14 links

A pine 20 inches diameter bears S70°E, 11 links

Description of corner evidence found:

NONE

(See map of survey number 541 dated November 1978)

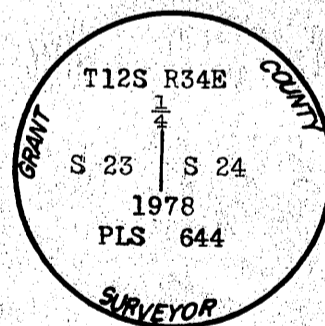
Description of monument and accessories established to perpetuate the original location of this corner

At proportionate distance I set 1"x30" iron pipe with brass cap marked as shown 24" in the ground from which:

A 14" pine bears S04°E, 37.9 feet marked 1/4 S24 BT

A 12" fir bears N58°W, 22.6 feet marked 1/4 S23 BT

Raised mound of stone



Brass washer nailed to BT blaze
Used steel tape and magnetic
compass with 20° East declination
Measured to center of BTs.

**REGISTERED
PROFESSIONAL
LAND SURVEYOR**

Duane I. Griffith
OREGON
JULY 10, 1964
DUANE I. GRIFFITH
644

Office of Surveyor County of Grant
State of Oregon, I hereby certify that the within instrument was filed in this office
for record on the 13 day of Dec, 1978.
Robert D. Begett by _____
(COUNTY OFFICIAL) (DEPUTY)

Attest: John Liversia, County Clerk
By Sommie Lawrence, Deputy

P-21